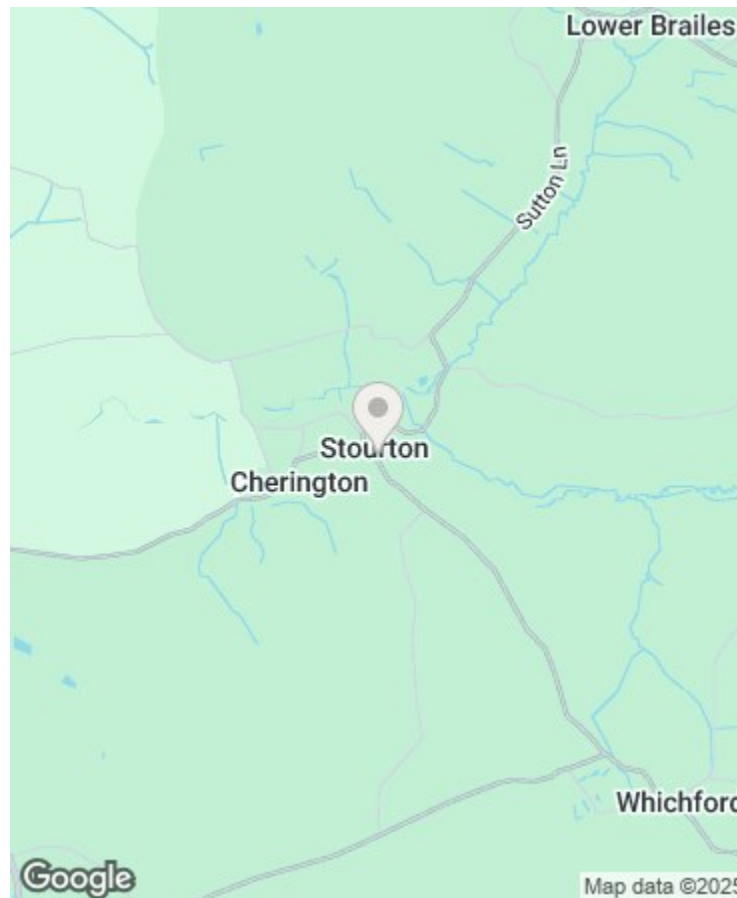




THE COTSWOLD LETTING AGENCY

BETTER BY FAR



Directions

Viewings

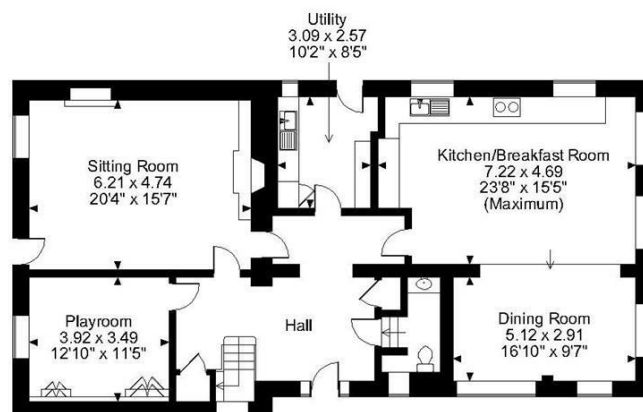
Viewings by arrangement only. Call 01993 684572 to make an appointment.

EPC Rating

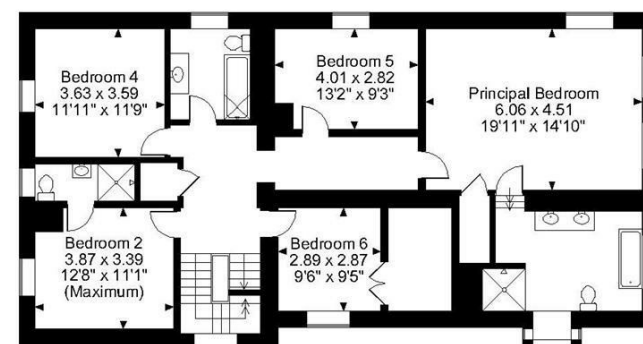
D

Energy Efficiency Rating		Current	Potential
Very energy efficient - lower running costs			
(92 plus) A			
(81-91) B			
(69-80) C			
(55-68) D		55	62
(39-54) E			
(21-38) F			
(1-20) G			
Not energy efficient - higher running costs			
England & Wales		EU Directive 2002/91/EC	

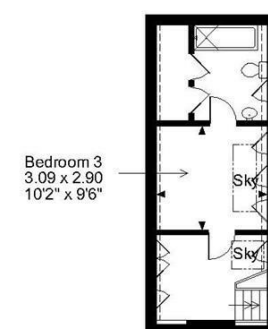
Brook House, The Bank, Shipston-on-Stour
Approximate Gross Internal Area
3201 Sq Ft/297 Sq M



Ground Floor



First Floor



Second Floor

FOR ILLUSTRATIVE PURPOSES ONLY - NOT TO SCALE
The position & size of doors, windows, appliances and other features are approximate only.
Denotes restricted head height
© ehous. Unauthorised reproduction prohibited. Drawing ref. dig/8532427/DMS



Brook House The Bank, Stourton, CV36 5HQ

£7,500 Per Month

- 6 Bedroom House
- Detached House
- Fireplace
- Picturesque Village
- Furnished

Brook House The Bank, Stourton CV36 5HQ

Brook House in an enchantment of fine interior, luxury design and comfort-it looks like it belongs on the front cover of a home magazine! The Owner's have magically transformed their family home into a contemporary and creative palace of colours, textures and tones. With its recent refurbishment, this property has everything to offer with modern appliances, luxurious features and comes generously furnished. Located in the North Cotswolds, in Shipston-On-Stour, this property is at the heart of vast valley views, countryside walks and spectacular views.

 6

 4

 3

 D

Council Tax Band: G



Property Information

Available for 3 months from the 1st of September

Brook House is a sizeable 6 bedroom property in the picturesque village of Stourton in Warwickshire. It has been owned by the same family for some time, but has recently been completely rerfurbished throughout, resulting in a spectacularly light and airy home with huge windows and a super range of contemporary furniture and fittings.

Entering through the house from the side entrance leads into a spacious hallway. Doors from here lead to the living room, snug and the centrepiece of the home - a wonderful kitchen-dining-family room. Crittal doors from here lead to the sheltered outdoor terrace and the lawned garden. Upstairs are the bedrooms - five on the first floor (three ensuite) then one more ensuite on the top floor making that ideally self-contained for guests.

Available for stays from a month or even longer, Brook House is a spectacular house in a spectacular place! Price is quoted excluding bills/utilities which will be charged extra on a usage basis.